

Part number	MN1C52D	MN1C52E
-------------	---------	---------

Pneumatic Data

Nominal capacity [l/min]	8	
Max pressure [bar]	2,5	
Max vacuum [mbar ass]	200	

Electrical Data

Voltage [V]	12	24
Current [A]	0,95	0,5
Protection class	IP30	

Wetted parts

Body pump	Ryton	
Gasket	Viton, EPDM [I]	
Diaphragm	Viton, EPDM [I], PTFE [P]	

General Data

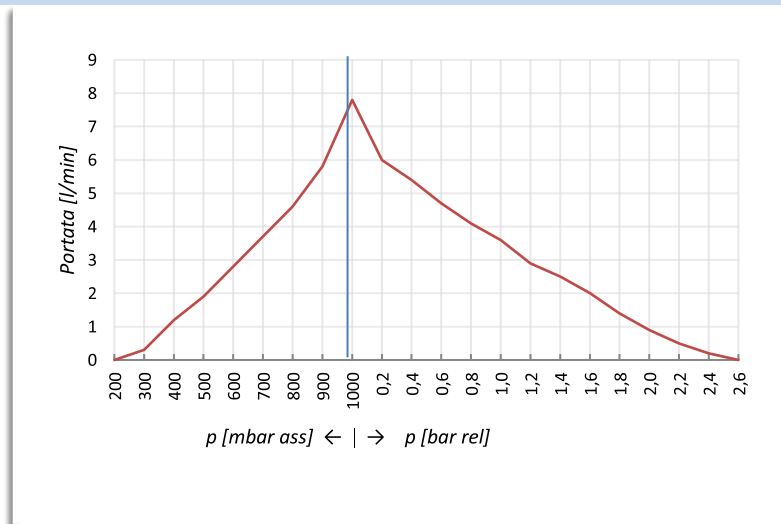
Weight [kg]	0,62	
Ambient temperature [°C]	10-50 °C	

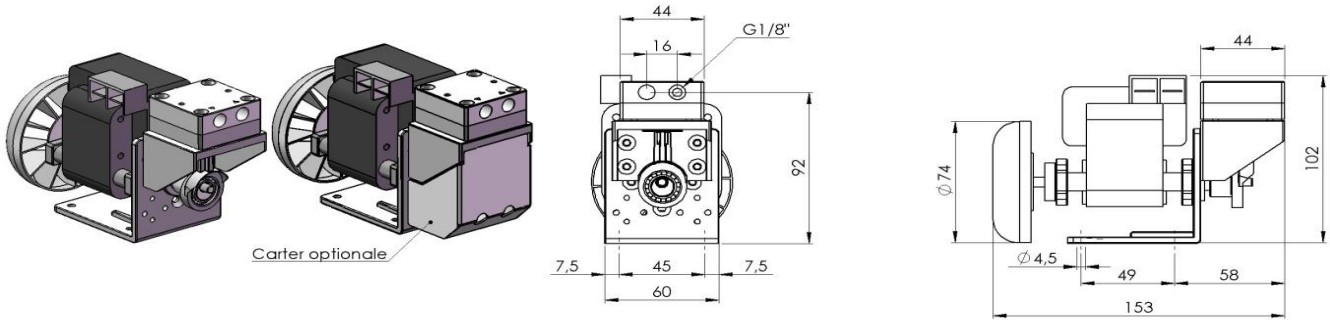
Optional

- Front cover [Q]
- Head with threaded 1/8" [B]
- Aluminum rod [Z]

Flow Curves

The informations in this datasheet are based on technical data and test results. It is the responsibility of the user to determinate the suitability of the product for intended use.





Part number	MN1A04C1S	MN1A04A2S
-------------	-----------	-----------

Pneumatic Data

Nominal capacity [l/min]	6	7,2
Max pressure [bar]		2,6
Max vacuum [mbar ass]		150

Electrical Data

Voltage [V]	230	110
Rated power [W]	60	72
Protection class		IP00

Wetted parts

Body pump	AISI 316
Gasket	AISI 316
Diaphragm	Viton, PTFE [P]

General Data

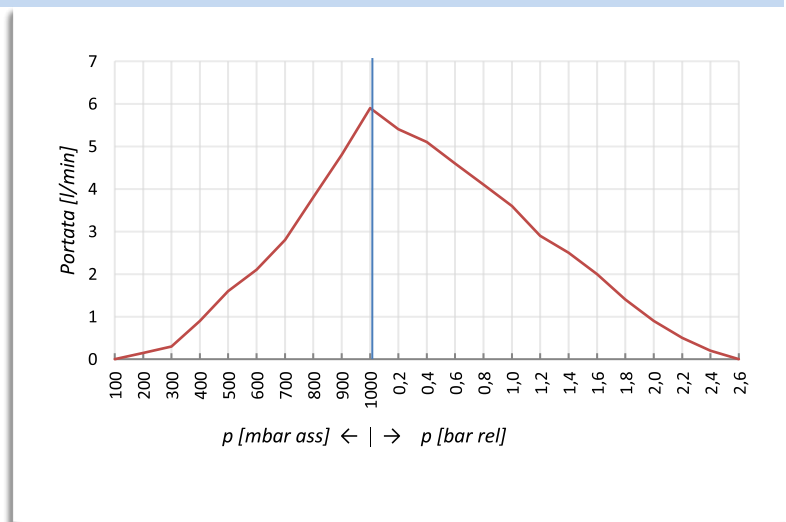
Weight [kg]	1,66
Ambient temperature [°C]	10-50 °C

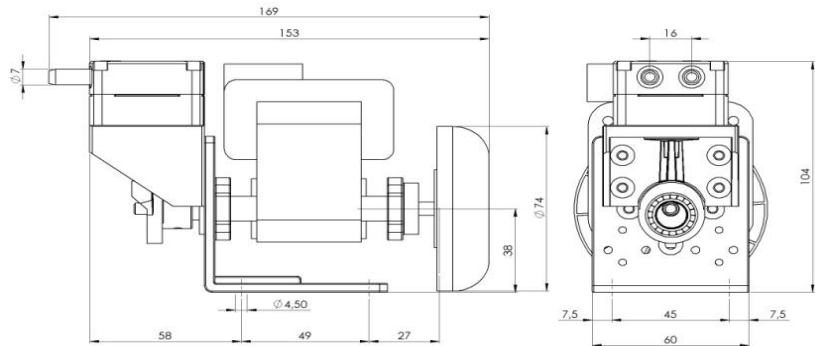
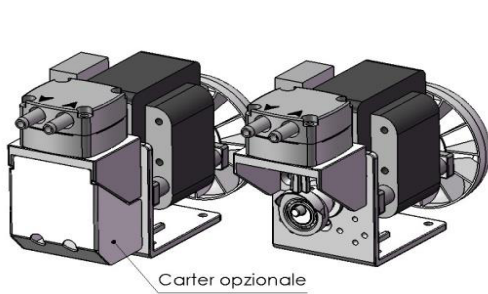
Optional

- Front cover [Q]
- Aluminum rod [Z]

Flow Curves

The informations in this datasheet are based on technical data and test results. It is the responsibility of the user to determinate the suitability of the product for intended use.





Part number	MN1A04F1	MN1A04A2
-------------	----------	----------

Pneumatic Data

Nominal capacity [l/min]	8	9,5
Max pressure [bar]		2
Max vacuum [mbar ass]		200

Electrical Data

Voltage [V]	230 [50 Hz]	110 [60 Hz]
Rated power [W]	60	72
Protection class		IP00
Insulation class		F

Wetted parts

Body pump	Ryton
Gasket	Viton, EPDM [I]
Diaphragm	Viton, EPDM [I], PTFE [P]

General Data

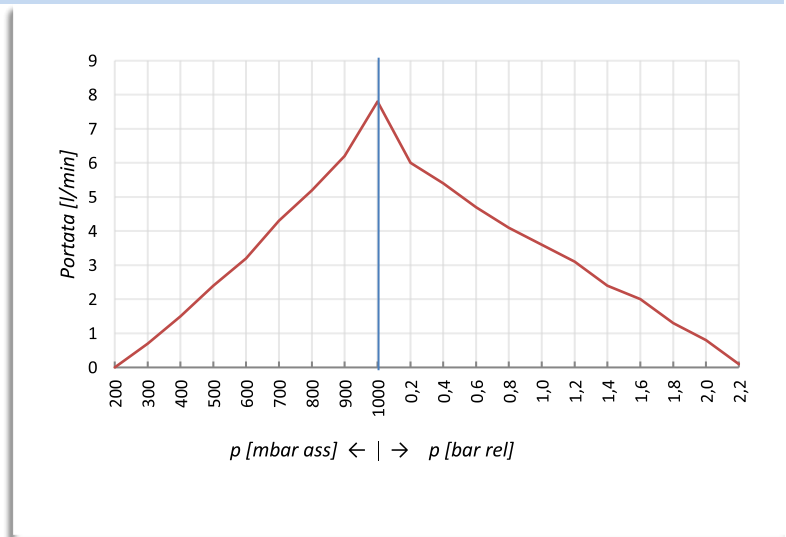
Weight [kg]	1,37
Ambient temperature [°C]	10-50 °C

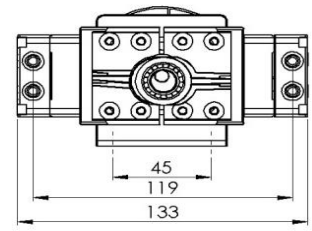
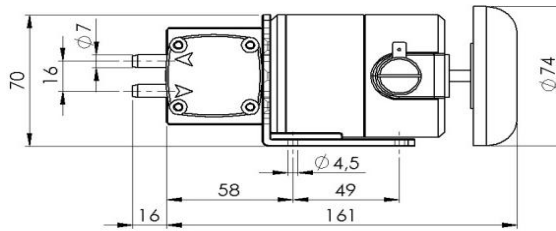
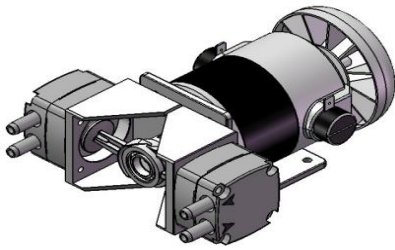
Optional

- Front cover [Q]
- Head with threaded 1/8" [B]
- Aluminum rod [Z]

Flow Curves

The informations in this datasheet are based on technical data and test results. It is the responsibility of the user to determinate the suitability of the product for intended use.





Part number	MN3C53D	MN3C53E
-------------	---------	---------

Pneumatic Data

Nominal capacity [l/min]		
Series		8,5
Parallel		17
Max pressure [bar rel]		
Series		3
Parallel		2
Max vacuum [mbar ass]		
Series	40 (60 vacuum & pressure)	
Parallel	200 (230 vacuum & pressure)	

Electrical Data

Voltage [V]	12	24
Rated power [W]		22
Protection class		IP 40

Wetted parts

Body pump	Ryton
Gasket	Viton, EPDM [I]
Diaphragm	Viton, EPDM [I], PTFE [P]

General Data

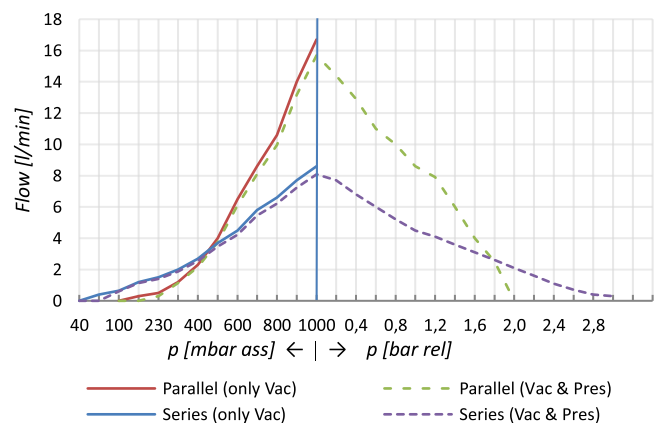
Weight [kg]	1,19
Ambient temperature [°C]	10-50 °C

Optional

- Head with threaded 1/8" [B]
- Aluminum rod [Z]

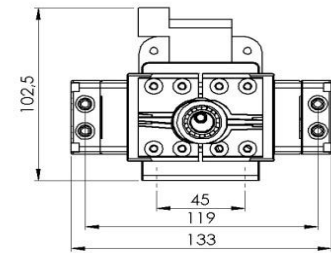
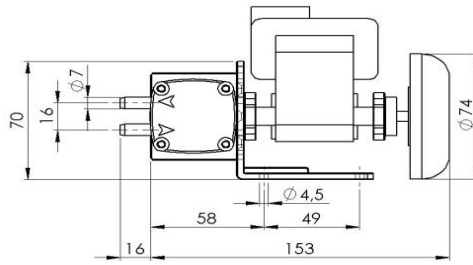
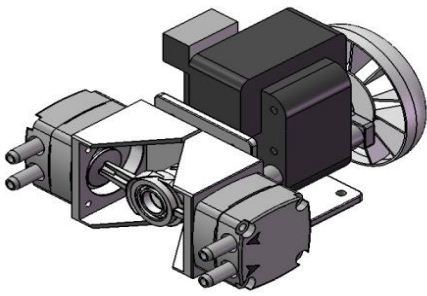
Flow Curves

The informations in this datasheet are based on technical data and test results. It is the responsibility of the user to determinate the suitability of the product for intended use.



DIAPHRAGM PUMPS

M41BX AC04



Part number	MN3A04F1	MN3A04A2
-------------	----------	----------

Pneumatic Data

Nominal capacity [l/min]		
Series		8
Parallel		16
Max pressure [bar]		
Series		3
Parallel		2
Max vacuum [mbar ass]		
Series		40 (60 vacuum & pressure)
Parallel		200 (230 vacuum & pressure)

Electrical Data

Voltage [V]	230 [50Hz]	110 [60 Hz]
Rated power [W]	60	72
Protection class		IP 00
Insulation class		F

Wetted parts

Body pump	Ryton
Gasket	Viton, EPDM [I]
Diaphragm	Viton, EPDM [I], PTFE [P]

General Data

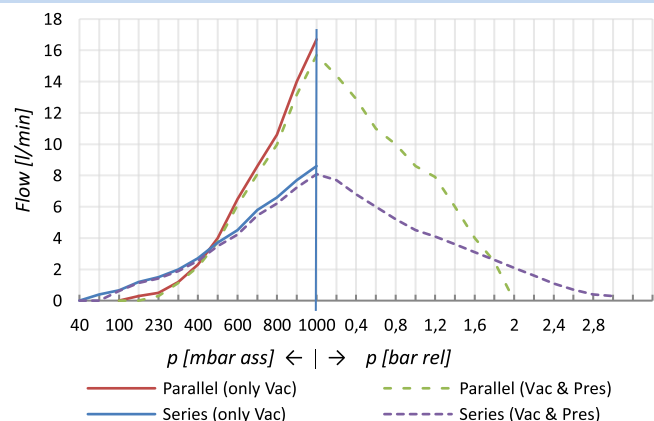
Weight [kg]	1,59
Ambient temperature [°C]	10-50 °C

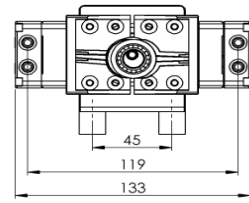
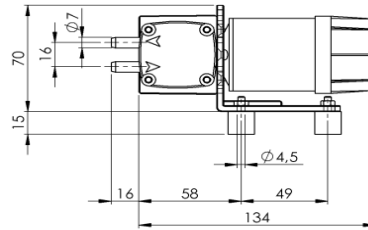
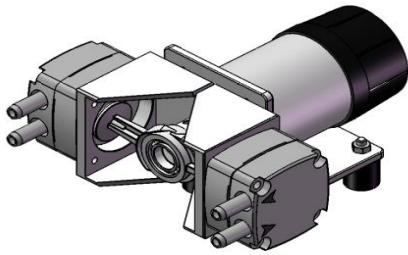
Optional

- Head with threaded 1/8" [B]
- Aluminum rod [Z]

Flow Curves

The informations in this datasheet are based on technical data and test results. It is the responsibility of the user to determinate the suitability of the product for intended use.





Part number	MN3C52D	MN3C52E
-------------	---------	---------

Pneumatic Data

Nominal capacity [l/min]		
Series		8,5
Parallel		17
Max vacuum [mbar ass]		
Series		40
Parallel		200

Electrical Data

Voltage [V]	12	24
Rated power [W]		6
Protection class		IP 40

Wetted parts

Body pump	Ryton
Gasket	Viton, EPDM [I]
Diaphragm	Viton, EPDM [I], PTFE [P]

General Data

Weight [kg]	0,8
Ambient temperature [°C]	10-50 °C

Optional

- Head with threaded 1/8" [B]
- Aluminum rod [Z]

Flow Curves

The informations in this datasheet are based on technical data and test results. It is the responsibility of the user to determinate the suitability of the product for intended use.

